



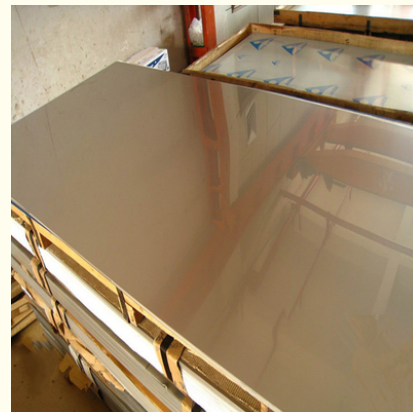
## 310S 316L 409 416 Stainless Steel Color 10Mm Sheets Plates Metal 4x8

### Our Product Introduction

for more products please visit us on [stainless-steel-sheetcoil.com](http://stainless-steel-sheetcoil.com)

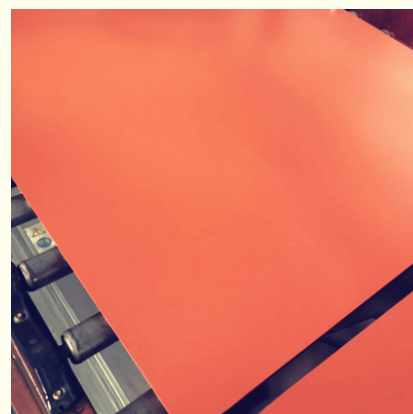
#### Basic Information

- Place of Origin: wuxi
- Brand Name: tai-steel
- Certification: ISO9001
- Model Number: TAI-2
- Minimum Order Quantity: 5 Tons
- Price: \$2,300.00/Tons 10-99 Tons
- Packaging Details: Wooden pallet , Wooden box or according to customer's request.
- Delivery Time: 8-14 days
- Payment Terms: L/C, T/T
- Supply Ability: 50000 Ton/Tons per Month

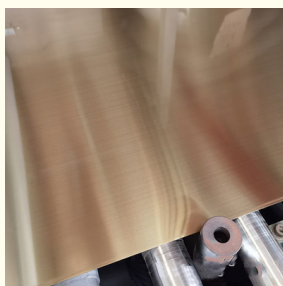
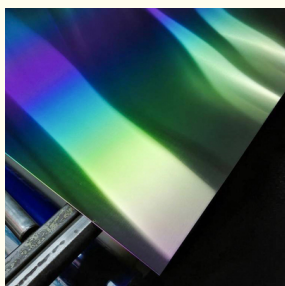


#### Product Specification

- Product Name: SS Sheet 304
- Packing: Standard Sea-worthy Packing
- Type: Plate, Sheet
- Grade: 300 Series, 200 Series, 400 Series
- Technique: Cold Rolled Hot Rolled
- Application: Decoration, Construction, Industrial, Civil, Machine Building
- Highlight: **Metal 4x8 Stainless Steel Decorative Sheet, 416 Stainless Steel Decorative Sheet, 10Mm 310S Stainless Steel Decorative Sheet**



#### More Images

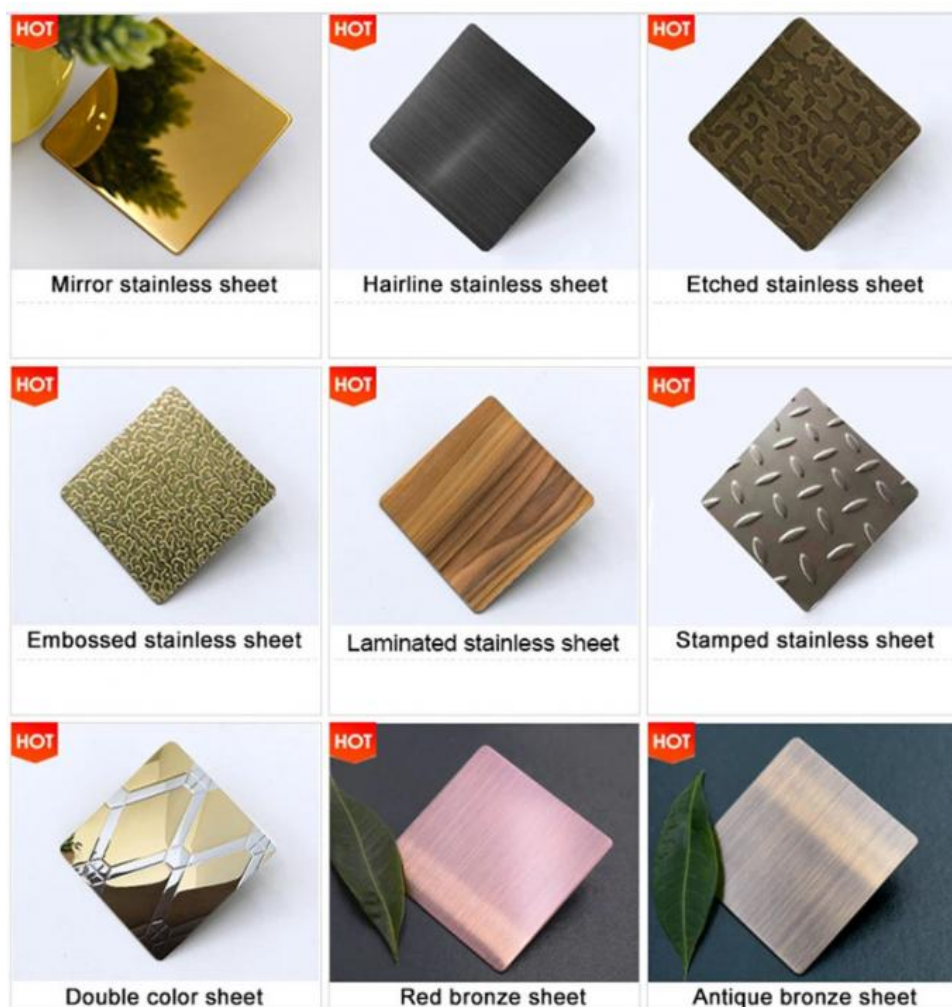


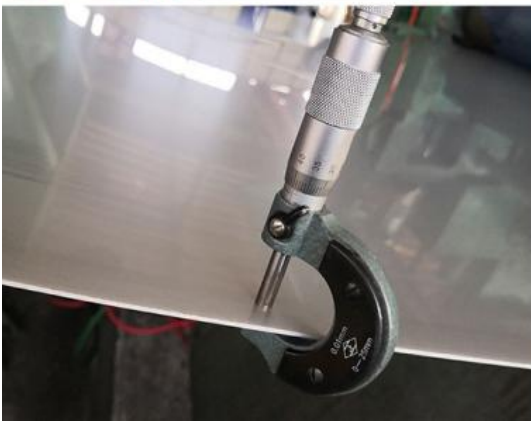
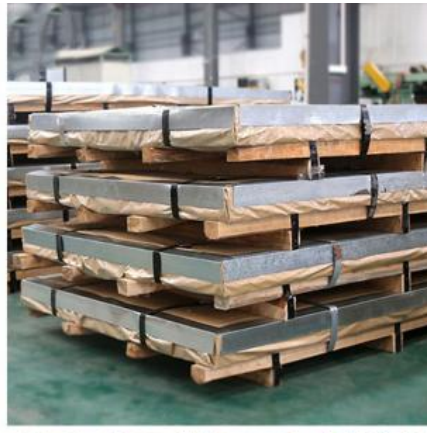
## Product Description

### Specification

Stainless Steel Color Sheet	
Product Name	Factory Supply 310S 316 316L 321h 409 416 Stainless Steel Color 10Mm Sheets Plates Metal 4x8
Material	mainly 201, 202, 304, 304L, 304H, 316, 316L, 316Ti, 2205, 330, 630, 660, 409L, 321, 310S, 410, 416, 410S, 430, 347H, 2Cr13, 3Cr13 etc 300series: 301, 302, 303, 304, 304L, 309, 309s, 310, 310S, 316, 316L, 316Ti, 317L, 321, 347 200series: 201, 202, 202cu, 204 400series: 409, 409L, 410, 420, 430, 431, 439, 440, 441, 444 Others: 2205, 2507, 2906, 330, 660, 630, 631, 17-4ph, 17-7ph, S31803, 904L, etc Duplex stainless steel: S22053, S25073, S22253, S31803, S32205, S32304 Special Stainless Steel: 904L, 347/347H, 317/317L, 316Ti, 254Mo
Width	3mm-2500mm or as required
Thickness	0.03mm-300mm or as required
Length	as required
Surface	2B, 2D, BA, NO.1, NO.4, 8K, Mirror, Checkered, Embossed, Hair Line, Brush, Etching, etc
Quality test	we can offer MTC (mill test certificate)
MOQ	1 ton, We can accept sample order.
Stock or not	Enough stock
Container Size	20ft GP: 5898mm (Length) x 2352mm (Width) x 2393mm (High) 40ft GP: 12032mm (Length) x 2352mm (Width) x 2393mm (High) 40ft HC: 12032mm (Length) x 2352mm (Width) x 2698mm (High)
Delivery time	Within 7-10 Working Days

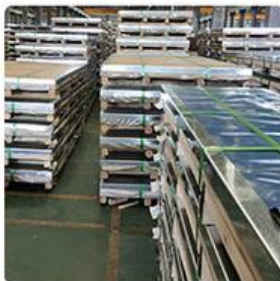
### Product Description





Packing & Delivery

## — Packaging —



Company Profile



Wuxi taiding stainless steel Co., Ltd., is a stainless steel/carbon steel/alloy company engaged in the researching, stocking, sale and service of stainless steel sheet, stainless steel pipes, stainless steel profile, stainless steel bar, stainless steel coils. Carbon steel, alloy steel products. We are located in China with convenient transportation access. Our factory has rich experience in selling, stocking as we are engaged in domestic market and foreign market. Our company is the collection of selling and stocking. And now we have stock over 2000 tons with more than 800 kinds of specifications in our warehouse. Dedicated to strict quality control and thoughtful customer service, our experienced staff members are always available to discuss your requirements and ensure full customer satisfaction. Selling well in all cities and provinces around China.

Our company is sincerely willing to cooperate with enterprises from all over the world in order to realize a win-win situation since the trend of economic globalization has developed with an irresistible force.



## Application

# Application place



**Wuxi TAIDING Stainless Steel Co., Ltd.**



+86 15850543668



vincentfang@taidingss.com



stainless-steelsheetcoil.com

28 Nongshi Road, Xishan District, Wuxi City, Jiangsu Province, China